

RANGI WINDOWS LTD

For aluminium windows and doors manufactured by Rangi Windows in New Zealand. Provide in compliance of Building (Building Product Information Requirements) Regulation 2022.

1. Product Overview

Custom aluminium joinery systems including awning windows, sliding doors, hinged doors and stacker doors.

Version: V1

Product Identifier:

- 1.1 Economic Residential System-Archer Series;
- 1.2 Residential New Build Supply-Victory Thermally Broken System;
- 1.3 Light Commercial System-Multi-Pod System

Scope & Limitations of Use

- 1.1 Economic Residential System-Archer Series;

Residential use for new building, whose R value requirement is 0.37 or the residential renovation projects. Equipped with argon gas Low-E glass(Light Bridge of Viridian);

Not suitable for buildings over three storey or 10 meters in height ;

Not tested or rated for fire resistance — cannot be used where fire-rated joinery is required .

- 1.2 Residential New Build Supply-Victory Thermally Broken System;

Residential use for new building, whose R value requirement is 0.46 or the residential renovation projects who ask for higher performance. Equipped with argon gas Low-E glass(Light Bridge of Viridian).

Not tested or rated for fire resistance — cannot be used where fire-rated joinery is required .

1.3 Light Commercial System-Multi-Pod System

Commercial use for new building or commercial renovation projects who need reveal to secure the stability or for use under extreme high wind zone. Equipped with safety double glazing glass. Light Bridge Low-E Glass will be in need if R value is required for 0.46.

Not tested or rated for fire resistance — cannot be used where fire-rated joinery is required .

2. NZ Building Code Compliance Summary

Complies with B1, E2, B2, H1 and F2 using tested systems and engineering reports.

Clause B1 STRUCTURE: Performance B1.3.1, B1.3.2 and B1.3.4. Products meet the requirements arising for loads from self-weight, wind and impact, i.e. B1.3.3 (a), (h) and (j)

Clause B2 DURABILITY: Performance B2.3.1 (b) 15 years, B2.3.1 (c) 5 years and B2.3.2

Clause E2 EXTERNAL MOISTURE: Performance E2.3.2. Window and door units conform and contribute to the wall cladding system meeting this requirement. See Paragraphs 14.1-14.4

Clause F2 HAZARDOUS BUILDING MATERIALS: Performance F2.3.1, F2.3.3 (a) and (b)

Clause F4 SAFETY FROM FALLING: Performance F4.3.1

Clause G4 VENTILATION: Performance G4.3.1 and G4.3.3

Clause G7 NATURAL LIGHT: Performance G7.3.1 and G7.3.2

Clause H1 ENERGY EFFICIENCY: Performance H1.3.1 and H1.3.2E – selective compliance depending on the product and glazing format

NZS 4211: Specification for performance of windows (incl. serviceability, deflection, operation of opening sashes, air infiltration, water penetration, ultimate strength, torsional strength of sashes)

NZS 4223.3: Glazing in buildings - Human impact safety requirements

Powdercoat or paint systems meet Window & Glass Association NZ Powder Coating Quality Assurance System (PQAS)

Powdercoatings formulated to meet AS 3715 and AAMA 2605

3. Design Requirements

Joinery designs must comply with NZBC Acceptable Solutions, including:

- E2/AS1 (external moisture)
- F4/AS1 (safety from falling)
- G4/AS1 (ventilation)
- G7/AS1 or G7/AS2 (natural light)

When used in mechanically ventilated or thermally controlled buildings, Rangi joinery achieves an air permeability classification of Class 4 in accordance with NZS 4211:2016. Custom fabrication is required for each project. The following must be confirmed by the designer/specifier:

- Unit dimensions and wall thicknesses
- Window/door configuration and opening types
- Wind and exposure zone requirements
- Hardware: restrictors, locks, closers, safety latches
- Finish and colour specification
- Reveal and trim preferences
- Any special detailing, such as cladding interfaces, rebates, thresholds, and drainage

4. Installation Details (on website_Home page_ downloads)

5. Maintenance Requirement (on website_Home page_ downloads)

6. Warnings and Bans

Is the building product/building product line subject to warning or ban under section 26 of the Building Act 2004?

Yes No



Rangi Windows

**Building Product Information Statement
Residential & Commercial Systems**

7.Warranty (10 Years for product and 5 Years for installation)

8.Contact Details

Manufacture location: New Zealand

Legal and trading name of manufacturer: Rangi Windows Ltd (Known as Rangi Windows)

Manufacturer address for service: 25 Stock St., New Lynn, Auckland 0600

Manufacturer website: rangindows.co.nz

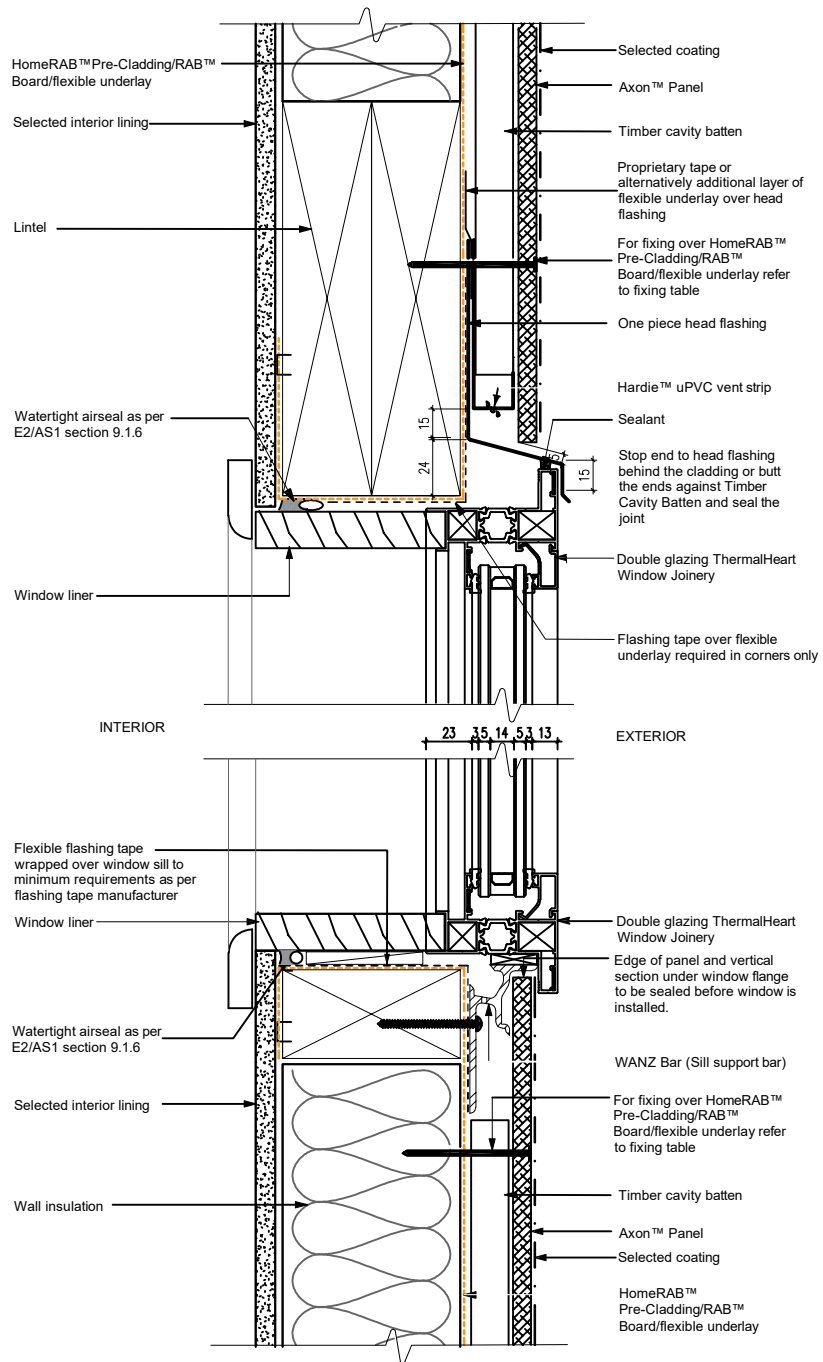
Manufacturer email: info@rangindows.co.nz or rangindows@gmail.com

Manufacturer phone number: 09 826 5288

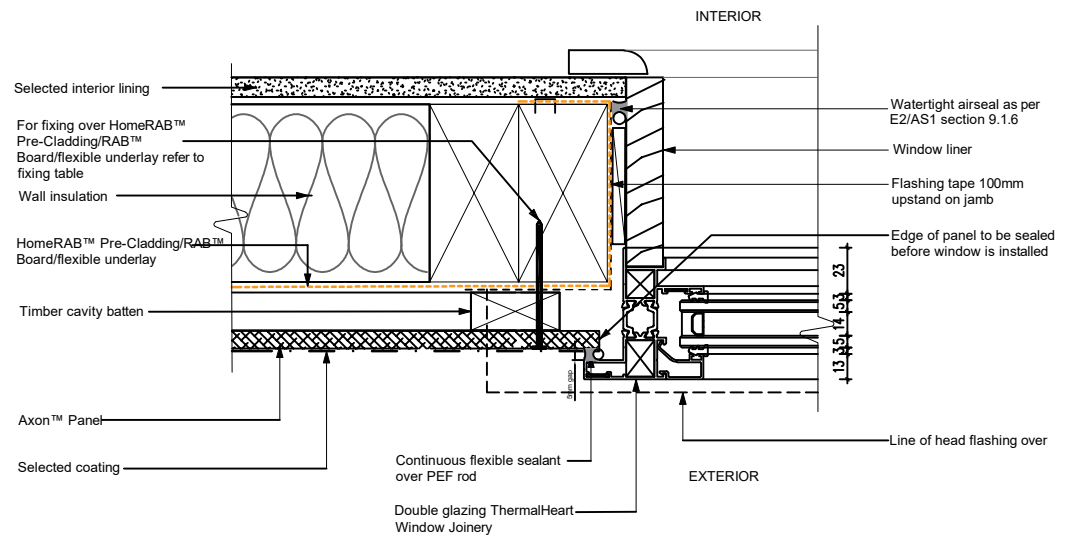
Manufacturer NZBN: 9429048398756

9.Appendices

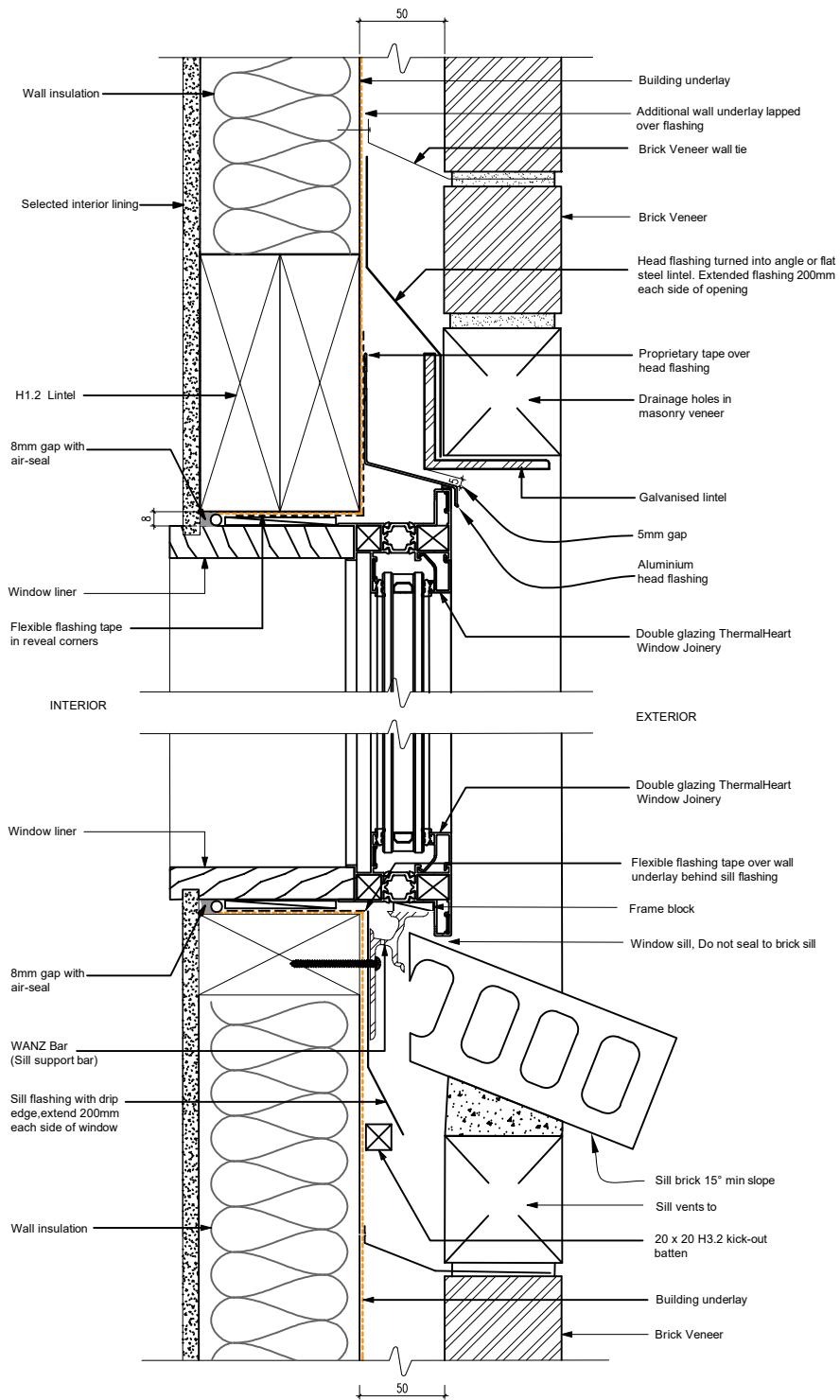
Attach supporting documents below.



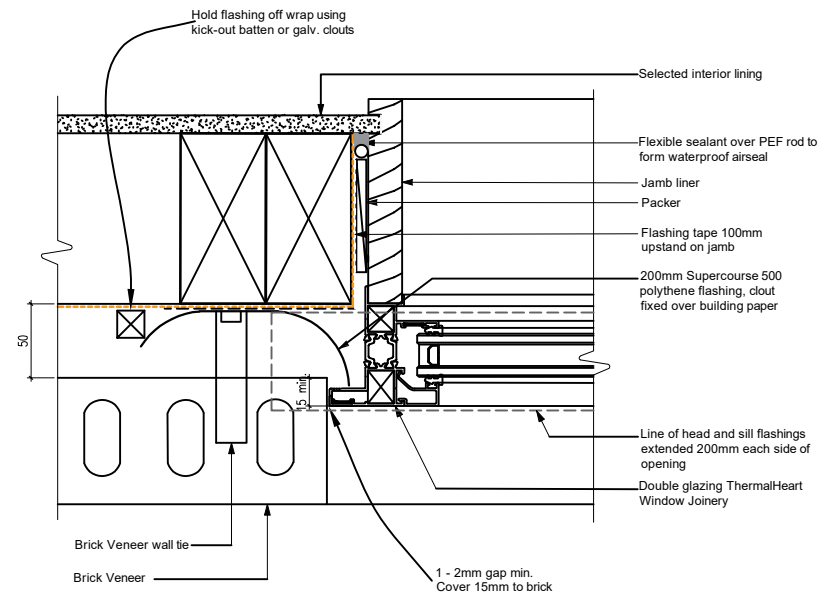
Window Head & Sill Detail - Axon Cladding



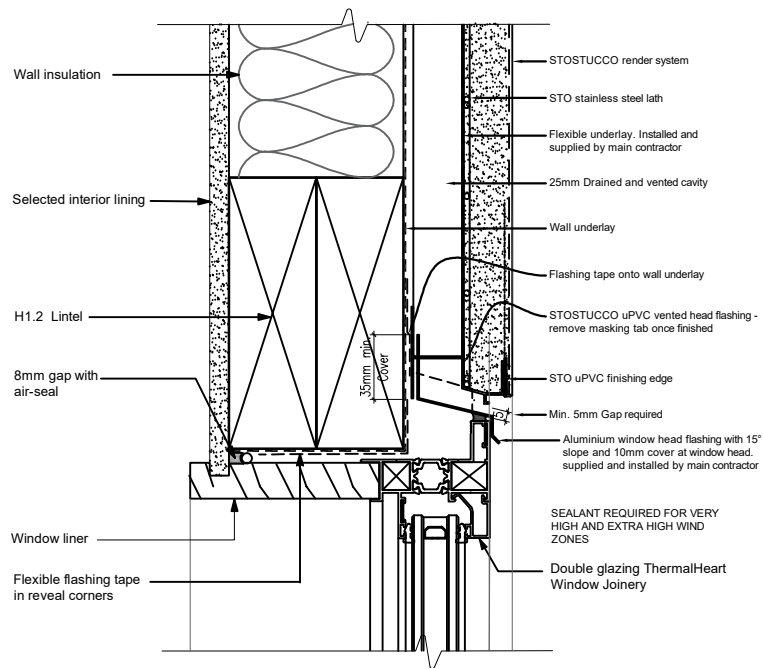
Window Jamb Detail - Axon Cladding



Window Head & Sill Detail - Brick Veneer Cladding

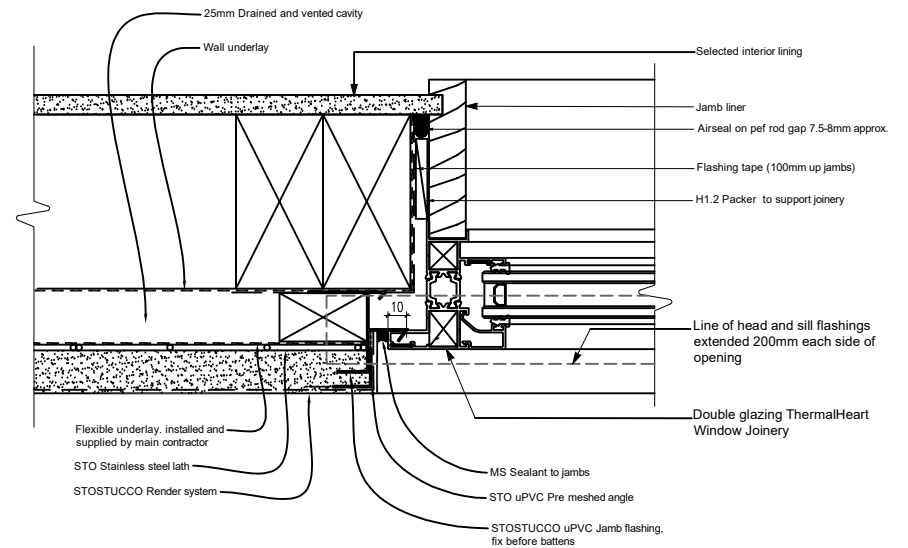
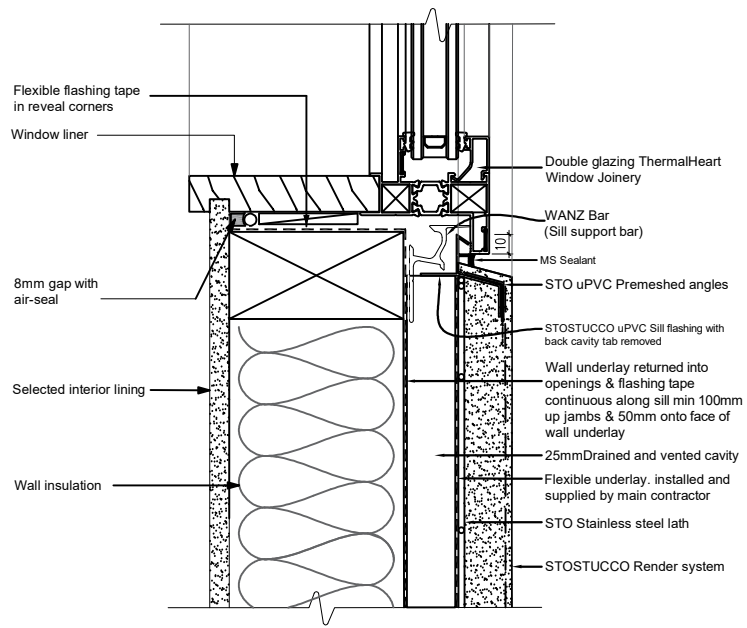


Window Jamb Detail - Brick Veneer Cladding



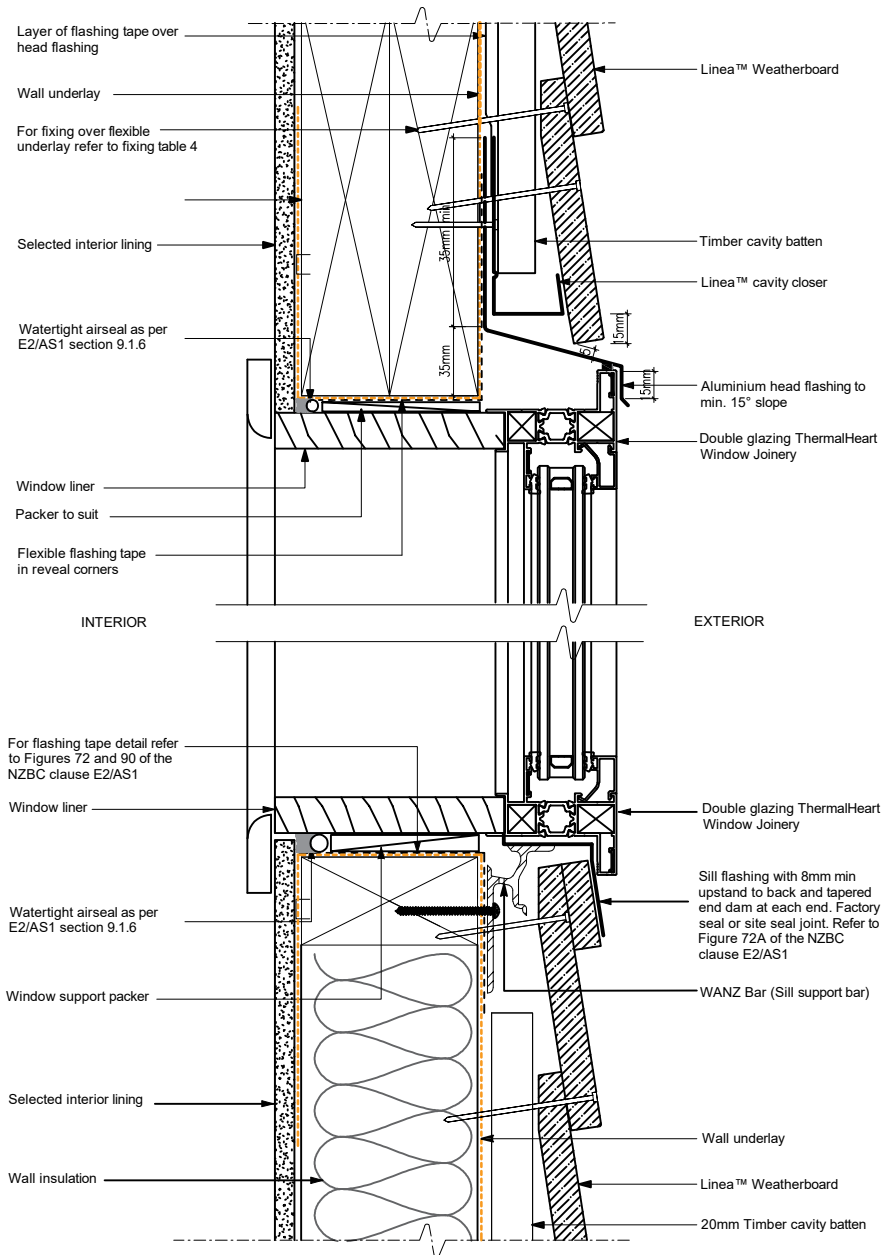
INTERIOR

EXTERIOR

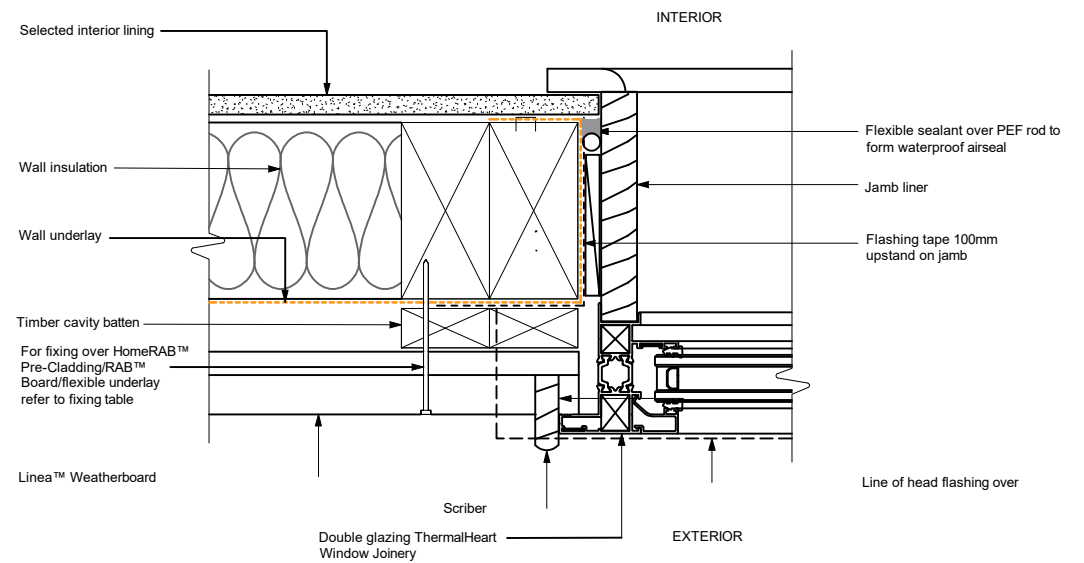


Window Jamb Detail - Plaster Cladding

Window Head & Sill Detail - Plaster Cladding



Window Head & Sill Detail - Weatherboard Cladding with Cavity



Window Jamb Detail - Weatherboard Cladding with Cavity